

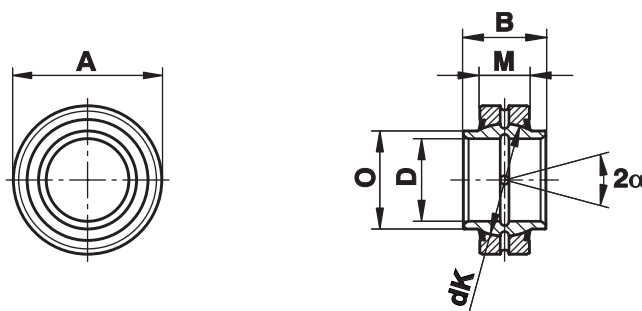
Spherical Plain Bearings - Steel on Steel

Series GE...HO-2RS

Spherical Plain Bearings
steel on steel, regreasable
with lip seal on both
sides.

Dimensions identical to
series GE...E (-2RS) but
ball with shoulder

Through the ball with
shoulder no distance
rings are required



Size (D)	B	M	A	O	dK	Static load C ₀ kN	Dynamic load C kN	Pivoting angle α	Weight g
16 ²⁾ $\begin{smallmatrix} 0 \\ -0,008 \end{smallmatrix}$	21	10	30 $\begin{smallmatrix} 0 \\ -0,009 \end{smallmatrix}$	21,0	25,0	106	21,2	3	44
17 $\begin{smallmatrix} 0 \\ -0,008 \end{smallmatrix}$	21	10	30 $\begin{smallmatrix} 0 \\ -0,009 \end{smallmatrix}$	21,0	25,0	106	21,2	3	44
20 $\begin{smallmatrix} 0 \\ -0,010 \end{smallmatrix}$	24	12	35 $\begin{smallmatrix} 0 \\ -0,011 \end{smallmatrix}$	24,0	29,0	146	30,0	6	72
25 $\begin{smallmatrix} 0 \\ -0,010 \end{smallmatrix}$	29	16	42 $\begin{smallmatrix} 0 \\ -0,011 \end{smallmatrix}$	29,0	35,5	240	48,0	4	130
30 $\begin{smallmatrix} 0 \\ -0,010 \end{smallmatrix}$	30	18	47 $\begin{smallmatrix} 0 \\ -0,011 \end{smallmatrix}$	34,2	40,7	310	62,0	4	160
35 $\begin{smallmatrix} 0 \\ -0,012 \end{smallmatrix}$	35	20	55 $\begin{smallmatrix} 0 \\ -0,013 \end{smallmatrix}$	40,0	47,0	400	80,0	4	250
40 $\begin{smallmatrix} 0 \\ -0,012 \end{smallmatrix}$	38	22	62 $\begin{smallmatrix} 0 \\ -0,013 \end{smallmatrix}$	45,0	53,0	500	100,0	4	340
45 $\begin{smallmatrix} 0 \\ -0,012 \end{smallmatrix}$	40	25	68 $\begin{smallmatrix} 0 \\ -0,013 \end{smallmatrix}$	51,5	60,0	640	127,0	4	450
50 $\begin{smallmatrix} 0 \\ -0,012 \end{smallmatrix}$	43	28	75 $\begin{smallmatrix} 0 \\ -0,013 \end{smallmatrix}$	56,5	66,0	780	156,0	4	590
60 $\begin{smallmatrix} 0 \\ -0,015 \end{smallmatrix}$	54	36	90 $\begin{smallmatrix} 0 \\ -0,015 \end{smallmatrix}$	67,7	80,0	1220	245,0	3	1060
70 $\begin{smallmatrix} 0 \\ -0,015 \end{smallmatrix}$	65	40	105 $\begin{smallmatrix} 0 \\ -0,015 \end{smallmatrix}$	78,0	92,0	1560	315,0	4	1660
80 $\begin{smallmatrix} 0 \\ -0,015 \end{smallmatrix}$	74	45	120 $\begin{smallmatrix} 0 \\ -0,015 \end{smallmatrix}$	90,0	105,0	2000	400,0	4	2470
90 ¹⁾ $\begin{smallmatrix} 0 \\ -0,020 \end{smallmatrix}$	80	50	130 $\begin{smallmatrix} 0 \\ -0,018 \end{smallmatrix}$	99,0	115,0	2440	488,0	4	2880
100 ¹⁾ $\begin{smallmatrix} 0 \\ -0,020 \end{smallmatrix}$	90	55	150 $\begin{smallmatrix} 0 \\ -0,018 \end{smallmatrix}$	113,0	130,0	3030	607,0	4	4650
120 ¹⁾ $\begin{smallmatrix} 0 \\ -0,020 \end{smallmatrix}$	108	70	180 $\begin{smallmatrix} 0 \\ -0,025 \end{smallmatrix}$	133,0	160,0	4750	950,0	4	8440

Materials:

Insert: Bearing steel to 100Cr6, Aisi 52100, hardened, ground, phosphated treated with molybdenum disulphide

Ball: Bearing steel to 100Cr6, Aisi 52100, hardened, ground, phosphated treated with molybdenum disulphide

¹⁾ Price and availability on request

²⁾ without -2RS seals



Divišova 1520 564 01 Žamberk
Tel. 465 612 090 , 465 613 280
e-mail: elo@loziska.com www.loziska.com