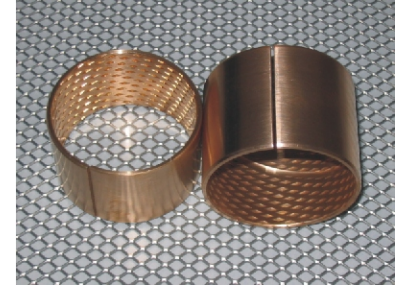
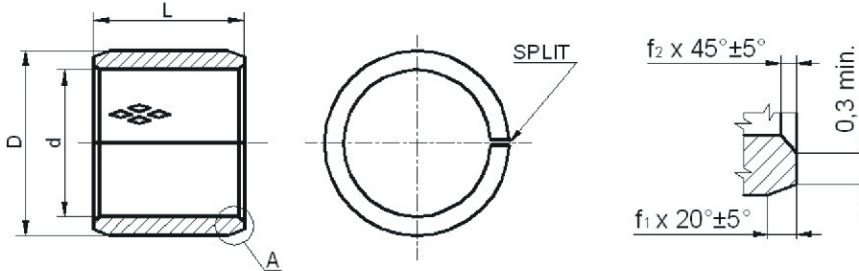


# B 90

## WRAPPED BUSHES WITH GREASE POCKETS (DIN 1494) CELOBRONZOVÉ ZAKRUŽOVANÉ PUZDRA S KEŠIENKAMI



DETAIL: A

Material: CuSn8 to DIN 17662

Unit:mm

d (H9 after pressing in housing H7)	D	f <sub>1</sub>	f <sub>2</sub>	length L													
				10	15	20	25	30	40	50	60	80	90	100			
10	12	0,8	0,4	●	●												
12	14			●	●	●											
14	16			●	●	●	●										
15	17			●	●	●	●										
16	18			●	●	●	●										
18	20			●	●	●	●										
20	23			●	●	●	●	●									
22	25				●	●	●	●	●								
25	28				●	●	●	●	●	●							
28	32				●	●	●	●	●	●	●						
30	34	1,0	0,6		●	●	●	●	●								
32	36			●	●	●	●	●	●	●							
35	39			●	●	●	●	●	●	●	●						
40	44				●	●	●	●	●	●	●	●					
45	50				●	●	●	●	●	●	●	●	●				
50	55	1,2	0,8			●	●	●	●	●	●	●					
55	60						●	●	●	●	●	●	●				
60	65							●	●	●	●	●	●	●			
65	70								●	●	●	●	●	●	●		
70	75									●	●	●	●	●	●	●	
75	80										●	●	●	●	●	●	
80	85											●	●	●	●	●	
85	90												●	●	●	●	
90	95													●	●	●	
95	100			1,4	0,8							●	●	●	●	●	
100	105												●	●	●	●	
105	110													●	●	●	
110	115														●	●	
115	120															●	
120	125																

Order example: B90 - 3225



Chemical compositions					
Material type	Cu%	Sn%	P%	Pb%	Zn%
FB090	91,3	8,5	0,2	-	-

Tech. Data				
Max. Load	Static	120N/mm <sup>2</sup>	Hardness	HB 110-150
	Dynamic	40N/mm <sup>2</sup>		
Max. Speed	2m/s		Temp.	-100°C - +200°C
Max. PV	2,8N/mm <sup>2</sup> *m/s		Friction coefficient	0,08-0,25
Tensile strength	450N/mm <sup>2</sup>		Thermal conductivity	60W/(m*k) <sup>-1</sup>
Yield point	250N/mm <sup>2</sup>		Coef. of thermal expansion	15*10 <sup>-6</sup> k <sup>-1</sup>